



ASHFORD CASTLE

EXCELLENCE SINCE 1928

THE PRINCE OF WALES COCKTAIL BAR



Welcome!

In 1905, in preparation for a visit by the future King George V of England, Lord and Lady Ardilaun built the Oak and River Room Lounges as well as the Prince of Wales Bar.

The Prince of Wales Bar was also Lord Ardilaun's smoking room and his motto can still be seen in the crest above the fireplace.

Our Responsibility to Mother Earth

We understand the environmental impact our business has on its surroundings and as an eco-friendly establishment, The Prince of Wales cocktail bar is continually working towards reducing its carbon footprint.

Some initiatives we have introduced to support a sustainable business and ease environmental pressures are:

- Straws** – only bio-degradable or metal straws used.
- Stirrers** – glass rod stirrers as opposed to plastic swizzle sticks.
- ‘To-Go’ Cups** – only reuseable ‘to-go’ cups available.
- Cocktail Pick** – reusable metal cocktail picks as opposed to single use plastics.
- Coasters** – reusable leather coasters instead of plastic lined or single use coasters.

Our goal; to reduce, if not eliminate, the use of disposable plastics in the service of all our beverages.

Please assist us in supporting these important environmental initiatives, should you have any questions please ask any member of staff.

Should you wish to purchase any of our personalised items as a memento of your time with us, they are available to buy from our in-house Boutique or Mrs Tea’s Boutique.

Thank you for your support.



ASHFORD CASTLE
EXCELLENCE SINCE 1928

The Prince of Wales Cocktail Bar Team



ASHFORD CASTLE

EXCELLENCE SINCE 1928

INDEX

pages

Ashford Castle Cocktail Collection -----	4 - 9
Seasonal Cocktails -----	10
Classic Cocktails -----	11
Martinis -----	12
Champagne Cocktails -----	12
Liqueur Coffees -----	13
Alcohol Free Cocktails -----	13
Champagne and Sparkling Wines -----	14
Bouchard Finlayson Wines -----	15
White Wines and Red Wines -----	16
Port and Sherry -----	16
Draught, Bottled Beers and Ciders-----	17
Aperitif -----	18
Spirit Enhancers and Soft Drinks -----	18
Vodka -----	19
Gin -----	20
Gin & Tonic Signature Serves -----	21
Rum -----	22
Tequila -----	23
Brandy (Cognac, Armagnac & Calvados)-----	24
Irish Whiskey -----	25 -27
Rare & Limited Irish Whiskey-----	27
North American Whiskey -----	27
Japanese & Taiwanese Whisky -----	27
Scotch Whisky -----	28
Whiskey Tasting Flights -----	29-30
Liqueurs & Schnapps -----	30
Cigars -----	31

ASHFORD CASTLE COCKTAIL COLLECTION



Our signature cocktails were inspired by the beautiful castle architecture, history and the people that shape Ashford Castles journey in the pursuit of excellence.

Our menu features locally sourced ingredients which our talented and passionate bar team have taken exceptional care to select unique flavours to our seasons, and delicately blend these into beautiful and exciting cocktails for your utmost enjoyment. Together each element has been carefully crafted and blended so that you savour everything at its very best.

Should your cocktail not on the list, please ask any member of our team and we will be delighted to make it for you—granted availability of ingredients required.



ASHFORD CASTLE

EXCELLENCE SINCE 1828



The Walled Garden

The majestic gardens as they exist today were laid out around 1868 by Lady Ardilaun. It's a beauty – more intimate and relatable than many other walled gardens, and now re-invigorated to its former glory, it is planted with fruit, vegetables, herbaceous perennials and a gorgeous hornbeam tunnel which burst into leaf after its winter slumber.

THE WALLED GARDEN LEMONADE

House Infused Fruit Tea Vodka, Walled Garden Seasonal Fresh Lemonade and Mint, handpicked at the gardens (seasonal).



ASHFORD CASTLE

EXCELLENCE SINCE 1828

20



“Nothing remains for me any longer – Anything that does remain means nothing”

In 1908, Lord Ardilaun erected a chalet on the grounds of Ashford Castle Estate for his wife. The chalet was their favourite place on the estate and it was here overlooking Lough Corrib Lord Ardilaun took his title.

Lord Ardilaun died in 1915 and a year later his wife had an obelisk erected near the chalet in his memory. She was obviously heartbroken as the inscription on the memorial reads as above...

THE OBELISK

To capture this timeless love between Lord and Lady Ardilaun, we have created an elixir using elderflower and wild pink roses, which in season grow around the Ashford Castle Estate. We start with a cube of white sugar coated with rose hibiscus nectar. A frozen pear vodka is then added and topped with Lanson Rosé Champagne. This is beautifully garnished with our homemade lemon foam and rose petal crystals.

28

Prices are subject to 15% service charge

7



ASHFORD CASTLE

EXCELLENCE SINCE 1828



The Guinness Tower

Built by Sir Benjamin Lee Guinness on the grounds of Ashford Castle in 1864 as a look out. Now it is a secret hidden gem on the Estate. The tower is over 20 meters in height and once you manage to climb the 81 step spiral stone staircase to the top, you are rewarded by stunning tree top views overlooking the Ashford Estate.

ARTHUR'S BELLINI

Lanson Champagne, Peach Schnapps and Guinness
Sir Benjamin Lee Guinness must be proud!



ASHFORD CASTLE

EXCELLENCE SINCE 1828



Rory O'Connor
(*Ruaidrí Ua Conchobair*)

The Last High King

His majesty's image is carved on the stone entrance of one of the walls at Ashford Castle and on a wooden carving at the heart of our beautiful Connaught Room's fireplace. Rory O'Connor co-founded Cong Abbey in early 1200's, it is here he retired as a monk. In the year 1198 the last High King of Ireland died and was buried at the Abbey, 30 years later He was moved and reburied beside his father at Clonmacnoise.

THE LAST HIGH KING

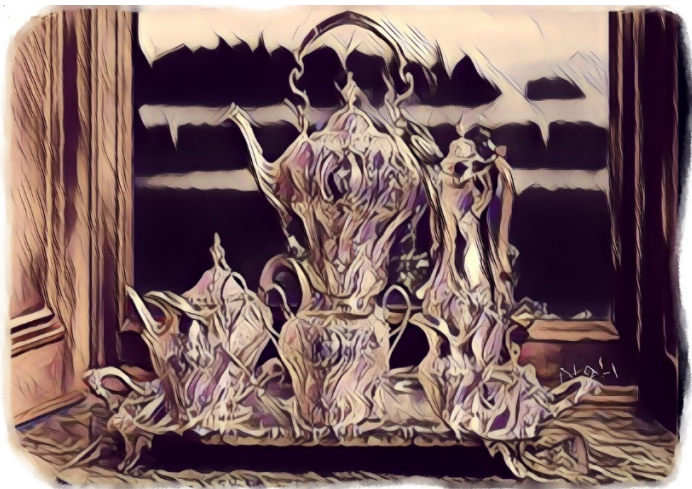
Through fierceness and just, the chieftains in Ireland unites. We combined the bitterness of Aperol, the sweetness and aromatics of Antica Formula Carpano and the smoothness of Slane Triple Cask Irish whiskey, in his honour.



ASHFORD CASTLE

EXCELLENCE SINCE 1928

20



Lady Ardilaun Tea Set

This vintage tea set was presented to Lord and Lady Ardilaun on the occasion of their 25th wedding anniversary by Jane Countess of Bantry on the 16th February 1896. Today we go back in history to create an unforgettable experience by serving you a cocktail in a vintage teapot and to celebrate the resurgence of new distilleries in the island of Ireland.

LADY ARDILAUN ICED TEA

A blend of house infused vanilla tea vodka, fresh orange juice, Grand Marnier and simple syrup in a vintage teapot.

20

Prices are subject to 15% service charge

10

SEASONAL COCKTAILS



Spring

Ashford Cobbler	19
Raspherri Vodka, Lime, Berry Wine Reduction, Rose Wine.	
Fizzy Blush	20
Rhubarb Nectar, Elderflower, Lemon & Rose Champagne.	
Inchagoill	19
Glendalough Seasonal gin, Apple Juice, Midori, Maraschino, Fresh Lime Juice & Soda Water	
Irish Spring	19
Drumshanbo Gunpowder Irish Gin, St. Germain Elderflower Liqueur, Fresh Cucumber and Soda Water.	
Prince' Kiss	19



ASHFORD CASTLE

EXCELLENCE SINCE 1928

Vodka, Blood Orange, Vanilla, Chambord Raspberry Liqueur,
Fresh Lime Juice & Egg White.

ASHFORD CLASSICS

Smoked Manhattan or Smoked Old Fashioned 20
Manhattan or Old Fashioned through a smoking gun.

Bloody Mary 20
Absolut Peppar Vodka, Tomato Juice, Worcestershire Sauce
and Tabasco Sauce.

Daiquiri, Classic or Frozen. 19

Margarita 19
Tequila, Cointreau and Lime Juice.

The Mojito 19
Havanna Club Especial, Fresh Mint, Lime, Sugar and Soda Water.

Clover Club 19
Beefeater Gin, Egg White, Lemon Juice and Chambord.

Mint Julep 19
Bourbon Whiskey, Fresh Mint and Sugar.

Negroni 19
Beefeater Gin, Campari and Sweet Vermouth.

Bramble 19
Beefeater Gin, Lime Juice, Sugar and Crème de Mûre.

Moscow Mule 19
Absolut Vodka, Ginger Beer and Lime Juice.

Sidecar
19

Prices are subject to 15% service charge 12



ASHFORD CASTLE

EXCELLENCE SINCE 1828

Martell VS Cognac, Cointreau and Fresh Lemon Juice.

Brandy Alexander

19

Martell VS Cognac, Crème de Cacao and Fresh Cream.

MARTINIS

Martini

19

Classic Martini – London dry gin, lase of dry vermouht stirred & garnished with either olives, twist or onions...the choice is yours...

Gunpowder Blush

20

Drumshanbo Gunpowder Irish Gin, Elderflower, Maraschino, Grapefruit and Falernum.

Vesper

19

Beefeater Gin, Absolut Vodka and Lillet Blanc.

Gimlet

19

Beefeater Gin, Fresh Lime Juice and Simple Syrup.

Cosmopolitan

19

Absolut Citron, Cointreau, Cranberry Juice and Fresh Lime Juice.

Manhattan

19

Woodford Reserve Whiskey, Sweet Vermouth and Angostura Bitters.

CHAMPAGNE COCKTAILS

Absolutely Fabulous

32

Lanson Champagne, Vodka and Cranberry Juice.

French 75

32

Lanson Champagne, Gin, Lemon Juice and Sugar.

Prices are subject to 15% service charge

13



ASHFORD CASTLE
EXCELLENCE SINCE 1928

The Chambord Royale	32
Lanson Champagne and Chambord.	
Prince of Wales	32
Lanson Champagne, Cognac, Cointreau and Kirsch.	

LIQUEUR COFFEE

Baileys Coffee with Baileys Irish Cream.	
12	
Calypso Coffee with Tia Maria.	12
Castle Gate Baileys & Cointreau in a Mocha.	12
Coffee Royal with Martell Cognac.	12
French Coffee with Kahlua & Grand Marnier.	12
Irish Coffee with Powers Irish Whiskey.	12
Italian Coffee with Amaretto.	12

ALCOHOL FREE COCKTAILS

Iced Tea Refresher	12
Homemade Fruity Iced Tea, White Lemonade.	
Not So Dark & Stormy!	12
Alcohol Free Dark Rum, Lime & Ginger Beer.	
Thirst Quencher	12
Homemade lemonade, Hibiscus rose topped with Soda Water.	
Sour Blossoms	12
Ceder Classic, Lemon, Orange, Honey and Egg White.	
Spritzero	12



ASHFORD CASTLE
EXCELLENCE SINCE 1928

Alcohol Free Italian Aperitivo, Orange and Grapefruit Soda.

WINE SELECTION

The cellars at Ashford Castle have always housed great wines from all over the world; this is reflected in our award-winning wine list of over 750 wines. This wine list has evolved over the years and today it has wines from every corner of the globe. To help you choose a wine by the glass we have selected the following wines for your enjoyment.

Our Full Wine List is available upon request.

CHAMPAGNE

Lanson Champagne Tasting, served in 75ml measure
(Père et Fils, Rosé, White Label)

€ 45/Tasting

	Glass	Bottle
Lanson, Père et Fils Brut NV	29	145
Lanson, White Label NV	36	180
Billecart – Salmon, Brut Reserve		170
Bollinger, Special Cuvée		190
Dom Perignon		590
Louis Roederer, Cristal 2014		695
Perrier -Jouët Belle Époque Vintage		375
Perrier -Jouët NV		160
Pol Roger, Brut		145
Ruinart Blanc de Blancs		295

ROSE CHAMPAGNE

Lanson Rosé, Brut NV	35	175
Laurent Perrier Rosé		220
Billicart – Salmon Rosé		245

Prices are subject to 15% service charge

15



ASHFORD CASTLE
EXCELLENCE SINCE 1928

Perrier Jouet Rosé

200

SPARKLING WINE

Valdo Millesimato, Valdobbiadene, (NV Prosecco)

16

80

Valdo Marca Oro, (Rosé Prosecco Brut)

16.5

82



BOUCHARD FINLAYSON
A BOUTIQUE VINEYARD

One of the most exciting additions to our list in recent years is the inclusion of the wines from our boutique winery in South Africa, Bouchard Finlayson, set up in 1989. Collaboration has always been a part of this wine estate, which is today owned by the Tollman family of The Red Carnation Hotel Collection and collaboratively run by Victoria Tollman and Peter Finlayson. Bouchard Finlayson is globally acclaimed for producing the best Pinot Noir in South Africa, as well as exceptional Chardonnays and Sauvignon Blancs.

An indigenous floral conservancy alive with birdsong and wildflowers surrounds the vineyards and winemaker Peter Finlayson in slow-ripened, flavour-rich wines of exceptional quality harnesses the promise of the unique terroir.

WHITE WINE

	Glass	Bottle
Blanc de Mer , Riesling Blend	14	56
Crocodile's Lair , Chardonnay (<i>oaked</i>)	17	68
Sans Barrique , Chardonnay (<i>un-oaked</i>)	16	64
Walker Bay , Sauvignon Blanc	15	59



ASHFORD CASTLE

EXCELLENCE SINCE 1828

RED WINE

Hannibal , Sangiovese, Syrah	29	115
Galpin Peak , Pinot Noir	29	115
Tête de Cuvée, Galpin Peak , Pinot Noir 2017	82	325

WHITE WINE

	Glass	Bottle
Sauvignon Blanc, Moreau , France	12.5	50
Sancerre, Rossignole	25	100
Chardonnay, Les Chapeliers , France	12	45
Chablis, William Febvre	26.5	105
Pinot Grigio, Il Bucco , Italy	12.5	48
Albarino, Charquina , Spain	14.5	56

ROSE WINE

Château La Coste (<i>Organic</i>), France	16
65	
Gerard Bertrand , <i>Gris Blanc</i> , France	13
50	

RED WINE

Sangiovese, Ziobaffa , Italy	12	45
Cabernet Sauvignon, Les Chapeliers , France		12.5
49		
Malbec, Pascal Toso , Argentina	16.5	65
Tempranillo, Emilio Moro , Spain	18	70
Cabernet Sauvignon, O'Dwyer , Australia	32.5	130

PORT

Cockburns , Special Reserve	7
Graham's , LBV	12

Prices are subject to 15% service charge

17



ASHFORD CASTLE

EXCELLENCE SINCE 1928

Graham's, 10 Year Old Tawny	18
Noval, 10 Year Old Tawny	12
Sandeman, Ruby Porto	7
Sandeman 5*, Tawny Porto	12

SHERRY

A Winter's Tale	7
Croft Original	7
Harveys Bristol Cream	7
Tio Pepe	

DRAUGHT

	Pint	Glass
Guinness	7	4
Rockshore	7.5	4.5
Heineken	7.5	4.5
Smithwicks	7	4

BOTTLED BEERS, CIDER & REFRESHER

Bulmers, Original		7
Coors Light	7	
Corona	7	
Heineken	7	
Peroni, Gluten Free	7	

LOCAL CRAFT BEERS & CIDER

Foxes Rock, Gluten Free	7.5
Galway Hooker, Pale Ale	7.5
Mescan, Saison	7.5
Mescan, Blond Ale	7.5
Stonewell, Medium-Dry Cider	7.5
Wicklow Wolf, Pale Ale	7.5

ALCOHOL FREE BEERS

Erdinger		6.75
Guinness 0.0	6.75	
Heineken 0.0	6.75	

APERITIF

Antica Formula Carpano	8
Aperol	7
Campari	7
Dubonnet	7
Fernet Branca	7.5
Branca Mentha	7.5
Lillet (Blanc, Rose, Rouge)	7
Martini (Sweet, Dry, Bianco)	7
Noilly Prat	7
Pernod	7
Pimms No.1	7

SPIRIT ENHANCERS & SOFT DRINKS

Fever Tree Mixers	4.5
Indian Tonic Water, Light Tonic Water, Elderflower Tonic Water, Soda Water, Ginger Beer, Ginger Ale.	
Poacher's Tonic, Poacher's Grapefruit Soda	
4.5	
Fior Uisce, 250ml Sparkling or Still	
4	
750ml Sparkling or Still	6
Freshly Squeezed Juices	5.5
Orange Juice, Grapefruit Juice	
Soft Drinks & Juices	4.5
Coke, Diet Coke, Coke Zero, Sprite, Fanta Orange, Fanta Lemon, Cranberry Juice, Orange Juice, Pineapple Juice, Tomato Juice & Apple Juice	

VODKA

Vodka is a clear distilled spirit that can be produced from anything containing starch or sugar, each of which affect the finished product's final taste. The most common basis are potatoes, sugar beet molasses and grain. Even though it is described as tasteless and flavourless, it is much more interesting than it might appear to the casual observer. Scrape beneath the surface and you'll find a spirit with a rich and diverse history.

WHEAT

Very neutral on the nose with a light hint of nuts and fennel. Clean on the palate and makes the perfect choice for a martini.

Absolut	7
Absolut Elyx	14
Dingle	8
Grey Goose	12
Ketel One	12
Loch Measc	12
Sausage Tree	12
Stolichnaya	8

CORN / RICE

Almost neutral on the nose with an extremely clean and soft palate and a light hint of peppery finish for corn vodka while a subtle sweetness on rice vodka.

Tito's	9
Haku	9

RYE

Pleasant light flavours of vanilla with a silky-smooth palate and a hint of black pepper.

Belvedere	12
Zubrowka Bison Grass	8

POTATO

Smooth in character with naturally sweet and creamy taste.

Chase	10
Chase Marmalade	14

GIN

Gin is a clear distilled spirit that is flavoured with juniper berries and other botanicals such as angelica roots, cardamom, liquorice, coriander, citrus peels and even green tea or cucumber. In recent years, unique and peculiar combinations of botanicals and aromatics were used to create exciting flavours with distinctive taste profiles.

CITRUSY & FRESH

Ashford Castle Estate Gunpowder Gin , Ireland	12.5
Beefeater , England	7.5
Beefeater Burroughs Reserve Aged in Oak Barrel, England	20
Dingle , Ireland	11
Ginraw , Spain	13
Malfy , Italy	9
Shortcross , Ireland	11
Tanqueray , Scotland	10

LIGHT & FLORAL

Bombay Sapphire , England	7.5
Boatyard , Ireland	9
Breil Pur , Switzerland	15
Drumshanbo Gunpowder , Ireland	12
Hendrick's , Scotland	12.5
Loch Measc , Ireland	12.5
Monkey 47 , Germany	15

FLAVOURFUL & FLORAL

Beefeater 24 , England	14
Blackwater Strawberry, Ireland	11
Caorunn , Scotland	11
Glendalough Seasonal Gin, Ireland	12.5
Tanqueray 10 , England	15

Prices are subject to 15% service charge

22



ASHFORD CASTLE

EXCELLENCE SINCE 1828

SPICY-SWEET & SAVOURY

Bertha's Revenge , Ireland	11
Elephant , Germany	15

GIN & TONIC

*A specific compliment enhances the natural flavours of each gin.
Each measure of gin is served with 200ml of Fever Tree or Poachers Tonic
Water and is served in our signature Gin & Tonic glass.*

Ashford Castle Estate Gin & Tonic	17
Ashford Castle Gunpowder Irish Gin <i>(with estate wood sorrel & Ashford estate first harvest honey)</i> , Pineapple Sage, Orange & Poachers Irish Light Tonic	
A Taste from Phoenix Park	15
Ha'penny Gin, Celery and Apple	
Monkey 47	19.5
Monkey 47, Blackberries and Sage (Seasonal)	
Poacher's Gunpowder	16.5
Gunpowder Gin, Poacher's Tonic, Blueberries, Grapefruit and Black Pepper	
Shortcross	15.5
Shortcross Gin, Orange and Fresh Basil	
That's A Spicy G & T	12
Bombay Sapphire Gin, Chilli and Lime	
TnT	14.5
Tanqueray and Tonic with Coriander	
The Rose Petal	15
Hendick's Gin, Cucumber, Rosewater and Rose Petals	

Prices are subject to 15% service charge 23

RUM

Rum is made from either molasses or sugar cane juice. The multi-coloured tapestry of rum is as rich as the history and culture that encircles this great spirit. One of the most complex spirit around with flavours full of versatility.

WHITE

Briefly aged, clear and lighter body

Bacardi	7.5
Malibu	7

DARK

More complex in aromas and flavours due to longer aging in oak barrels.

Captain Morgan, Spiced	7.5
Gosling's, Black Seal	9
Havana Club Anejo Especial	8
Havana Club, 3 años	7.5
Havana Club, 7 años	11
Havana Club 15 Años Anejo Gran Reseva	50
Mount Gay	8
Ron Zacapa Centenario, Solera 23	16

TEQUILA & MEZCAL

Tequila is Mexico's national spirit. It is made from blue or Weber agave plant or “agave tiquilana” where the drink gets its name. Regional production primarily in the area surrounding the city of Tequila and in the highlands (Los Altos). **Mezcal**, unlike Tequila can be made from all varieties of agave plant.

BLANCO/JOVEN

Also known as “Silver”, is Blue Agave spirit’s purest form where the true flavours and the intensity of the agave are present. Blanco Tequila’s are bottled within 60 days of distillation.

1800	10
Ilegal (Mezcal), Espadin	13
Patrón, Silver	14
Herradura	12

REPOSADO

Reposado Tequila is rested in wood barrels for a minimum of two months but less than a year. Generally, a little smoother than blanco tequilas and a good balance between fresh agave and wood.

1800	12
Herradura	13

ANEJO

The Anejo Tequila are more complex and richer in flavour due to longer time spent in wooden barrels. It is aged for at least one but no longer than three years in oak barrels.

Herradura, Añejo	15
Patrón	

EXTRA ANEJO

Extra Anejo's are extremely smooth with very complex flavours.
The minimum period of ageing is three years in wooden barrels.

Tapatio, Excelencia, Gran Reserva 45

BRANDY

Is a distilled spirit made from fermented fruit juice like grapes, apples, pears and other sweet fruits with flavours and sensations, ranging from fruitiness, warmth, spicy and dry to oaky notes.

COGNAC

Courvoisier	8
Hennessy VS	10
Hennessy VSOP	
14	
Hennessy XO	35
Hennessy Paradis	255
Hennessy Paradis Imperial	
435	
Louis XIII	435
Martell VS	10
Martell VSOP	14
Martell Cordon Bleu	35
Rémy Martin VSOP	14
Rémy Martin XO	35

ARMAGNAC

Armagnac VSOP	12
Armagnac Veil (Henri Faget) 1964	95

CALVADOS

Chateau du Breuil	7.5
-------------------	-----

FRUIT BRANDY



ASHFORD CASTLE

EXCELLENCE SINCE 1828

Apricot

6

Cherry Brandy

6

Kirsh

6

Poire Williams

6

IRISH WHISKEY

SINGLE POT STILL

Single Pot Still whiskey is unique to Ireland; it is the style of whiskey once the world fell in love with. It is made by adding Un-malted barley to a malted barley, which gives a creamy, silky mouth feel, and full complex flavours combined with an intriguing spiciness to the finish.

Drumshanbo, Inaugural Release / Single Pot Still

12

Green Spot

12

Green Spot, Château Leoville Barton / Château Montelena

14

Method & Madness, French Chestnut

16

Powers John's Lane, 12 Year Old

15

Redbreast, 12 Year Old

15

Redbreast, 12 Year Old, Cask Strength

18

Redbreast, 15 Year Old

25

Redbreast, Lustau

16

RedBreast, 21 Year Old

45

Red Spot, 15 Year Old

30

Yellow Spot, 12 Year Old

17

SINGLE MALT

Single Malt whiskey is made of malted barley from one single distillery.

Bushmills, 10 Year Old

12

Bushmills, 16 Year Old

17

Bushmills, 21 Year Old

39

Bushmills, 1995 Marsala Cask

75

Bushmills, 2011 Sauternes Cask

20

Clan Colla, 19 Years Old

37

Prices are subject to 15% service charge

27



ASHFORD CASTLE

EXCELLENCE SINCE 1828

Connacht	11
Connemara, Peated Malt	10
Connemara, 12 Year Old	14
Drumshanbo, Galanta, Single Malt	16
Dunville's, 12 Years Old PX	16
Glendalough, 7 Year Old,	14
Glendalough, 13 Year Old	22
Knappogue Castle, 12 Year Old	13
Knappogue Castle, 14 Year Old	15
Method & Madness, French Limousin Oak	19

IRISH WHISKEY

SINGLE MALT *(Continued)*

Sexton, Single Malt	10
Teeling, Single Malt	10
The Irishman, Single Malt 12	
The Irishman, 12 Year Old	15
Tyrconnell, Single Malt	10
Tyrconnell, 10 Year Old (Sherry, Port Cask)	13

GRAIN

Whiskey distilled from cereal grains other than barley. Grain whiskey have a very distinct and individual flavour profile.

Teeling, Single Grain	10
Method & Madness, Virgin Spanish Oak	13

BLENDED

A combination of malt and grain spirits from a single or different distilleries, which helps to craft a very well-rounded whiskey.

Bushmills, Original or Black Bush	8
Irish American, Classic Blend	8
Irish American, 10 Year Old	12
Jameson	8
Jameson, Cask Mate, Stout edition or IPA edition	11



ASHFORD CASTLE

EXCELLENCE SINCE 1828

Jameson, Crested	11
Jameson, Black Barrel	12
Jameson, Black Barrel Proof	14
Jameson, Makers Series (Blender's Dog/Cooper Croze/Distiller's Safe)	14
Jameson, 18 Year Old	45
Pearse, The Original or Distillers Choice	9
Pearse, Founders Choice or Coopers Select	14
Powers	8
Powers, 3 Swallow	12
Slane, Triple Cask	9
Tullamore Dew, 12 Year Old	11

RARE & LIMITED IRISH WHISKEY

Bushmills 25 Year Old	285
Bushmills 30 Year Old	350
Dungourney 64	315
Knappogue Castle 1951	475
Midleton, An Dair Ghaelach	85
Midleton Barry Crockett, Legacy	65
Midleton, Forêt de Tronçais, <i>Edition 1</i>	465
Midleton Very Rare	85
<i>Ashford Castle Single Cask</i> , 20 Year Old	
175	
<i>(Available by the bottle online and at our in-house boutiques)</i>	
<i>Silent Distillery Chapter One</i>	3,250
<i>Silent Distillery Chapter Two</i>	3,850
<i>Silent Distillery Chapter Three</i>	4,350
Midleton, 25 Year Old Pure Pot Still	675
Teeling, 32 Year Old Single Malt	235

N. AMERICAN WHISKEY

Buffalo Trace	9
Canadian Club	8
Crown Royal	9
EH Taylor, Small Batch	36
Jack Daniels, Single Barrel	14
Keeper's Heart, SPS & Rye or SPS & Bourbon	10
Maker's Mark	10
Pearse Lyons Reserve, Single Malt	17

Prices are subject to 15% service charge

29



ASHFORD CASTLE

EXCELLENCE SINCE 1928

Sazerac, 6 Year Old Rye	12
Town Branch, (Bourbon, Rye)	16
Uncle Nearest	17
Woodford Reserve	10

JAPANESE & TAIWANESE WHISKY

Hibiki, Japanese Harmony	30
Kavalan, Solist—Vinho Barrique, Cask Strength	45
Kurayushi, 18 Year Old, Pure Malt	38
Nikka, 12 Year Old Blend / Pure Malt	
25	
The Hakushu, Distiller's Reserve	26
The Hakushu, 12 Year Old Single Malt	35

SCOTCH WHISKY

HIGHLAND MALT WHISKY

Glenmorangie, 10 Year Old	13
Glenmorangie, 18 Year Old	30
Oban, 14 Year Old	15

ISLAND OF ISLAY & SKYE MALT WHISKY

Bowmore, 18 Year Old	22
Laphroaig, 10 Year Old	12
Lagavulin, 16 Year Old	18
Talisker, 10 Year Old	12

SPEYSIDE MALT WHISKY

Glenfiddich, 12 Year Old	12
Macallan, 12 Year Old (Sherry, Double Cask or Triple Cask)	18
Macallan, 18 Year Old Triple Cask	65
Macallan, 25 Year Old	355
The Glenlivet, Founder's Reserve	12
The Glenlivet, 15 Year Old	16
Scapa Skiren	20

LOWLAND & CAMPBELTOWN MALT WHISKY

Auchentoshan, Three Wood	14
---------------------------------	----

Prices are subject to 15% service charge 30



ASHFORD CASTLE
EXCELLENCE SINCE 1828

Springbank, 15 Year Old 16

BLENDING SCOTCH WHISKY

Chivas Regal, 12 Year Old	
12	
Chivas Regal, 18 Year Old	
18	
Dewars, White Label	8
Dewars, 12 Year Old	12
Johnnie Walker, Red Label	7
Johnnie Walker, Black Label	10
Johnnie Walker, Blue Label	42
Johnnie Walker, King George V	220

WHISKEY TASTING FLIGHTS

Your chance to sample three of our Irish, Scotch, American or Japanese Whiskeys from our tasting tray. (Served in 25ml measure)

IRISH

Pure Pot Still vs. Single Malt vs. Blended Whiskey 32

Redbreast, 12 Years Old - *Pure Pot Still*

Connemara 12 Years Old - *Single Malt*

Jameson Black Barrel - *Blended*

Spots Whiskey

Green Spot, Yellow Spot 12 Year Old, Red Spot 15 Year Old 38

Midleton Method & Madness Wood Finishes 32

Virgin Spanish Oak, French Limousin Oak, French Chestnut

Pearse Lyons Irish Whiskey Collection 25

The Original, Founder's Choice, Cooper's Select

SCOTCH

Glenmorangie 10, The Glenlivet Founder's Reserve, Laphroaig 10 35

Prices are subject to 15% service charge 31



ASHFORD CASTLE

EXCELLENCE SINCE 1928

JAPANESE

Nikka Pure Malt, Hakushu Distiller's Reserve, Yamasaki 12 38

RARE & LIMITED WHISKEY TASTING FLIGHTS

IRISH

Midleton Very Rare, Midleton Daer Gaelach Edition,

195

Ashford Castle Midleton Very Rare 20 Year Old Single Cask

Dungourney 1964, Teeling 32 Year Old, Midleton 25 Year Old 675

SCOTCH

Macallan 18 Year Old, Johnnie Walker King George V, 430

Macallan 25 Year Old

LIQUEURS & SCHNAPPS

Amaretto Disaronno	7
Amaro	6.5
Baileys	7
Benedictine	9
Chambord	6.5
Crème de Menthe	6.5
Drambuie	9
Micil <i>Irish Cream</i>	8
Frangelico	6.5
Grand Marnier	9
Irish Mist	8
Jägermeister	6.5
Kahlua	6.5
Midori	6.5
Peach Schnapps	6.5
Sambucca	6.5
Southern Comfort	6.5
St. Germain	10

Prices are subject to 15% service charge 32



ASHFORD CASTLE
EXCELLENCE SINCE 1928

Tia Maria

6.5

CIGARS

Cohiba Robusto

95

One of the finest vitolas of the brand, and possibly the best robusto currently coming out of Havana.

Cohiba Siglo II

65

One of the greatest petit coronas, with rich flavours of wood and vanilla, a medium body and the traditional silky-smooth wrappers found in Linea 1492.

Davidoff WSC Original Robusto

58

Harmony of leather and dark coffee flavours courtesy of tobacco leaves blended from the Dominican Republic, Nicaragua and Mexico and perfectly balanced by marrying to an oily and silky wrapper from Ecuador.

Hoyo de Monterrey Epicure No.2

55

Prices are subject to 15% service charge

33



ASHFORD CASTLE

EXCELLENCE SINCE 1928

One of the favourite Cuban robusto, It's delicate, crisp and clean with floral and fruity profile that is complex but maintains its subtle sophistication.

Monte Cristo No4 65

Theres a reason why it's the best selling Cuban cigar.
It's fresh and clean, with coffee, leather and earthy tones.

Partagas Serie D No4 58

Smooth and oily. Full bodied, with balanced flavours of wood and spice, the D4 is the delight of every serious cigar smoker.

Trinidad Reyes 52

This cigar is one of the smoothiest and creamiest petit coronas. Like all Trinidads, the Reyes is constructed exceptionally well. Rich and complex, with flavours of wood, coffee spices and vanilla.