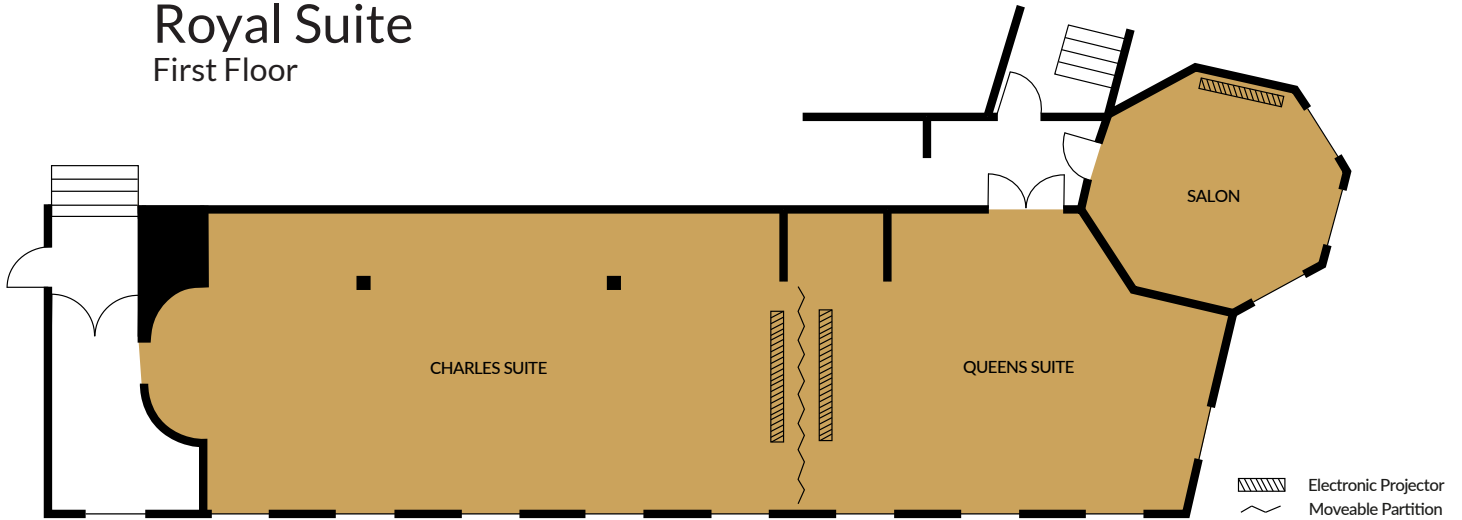


## Royal Suite First Floor



CAPACITIES		
THEATRE		120
U-SHAPE		50
CLASSROOM		66
BOARDROOM		50
CABARET		60
DINNER		100 or 80 with dancefloor
RECEPTION		150

FACILITIES	
DAYLIGHT	YES
PILLARS	YES - NON-OBTRUSIVE
AIR-CON	YES
EQUIPMENT	SCREEN AND PROJECTOR/ PA SYSTEM

DIMENSIONS	
LENGTH	17.6
WIDTH	5.23
HEIGHT	2.8
AREA	92

