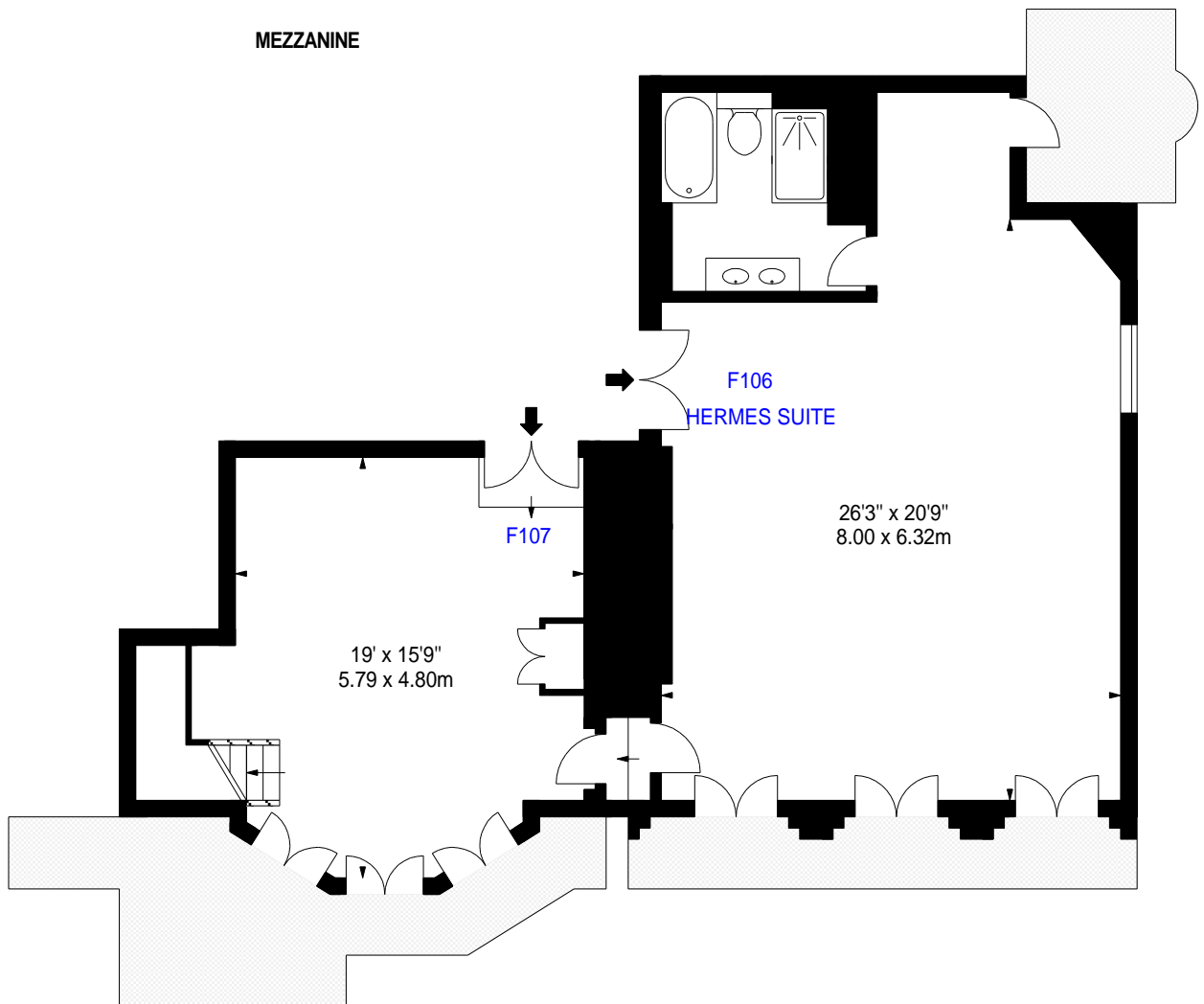


MEZZANINE



SECOND FLOOR

Property Details:

106 - 107 THE MILESTON HOTEL
1 - 2 KENSINGTON COURT
LONDON
W8 5DL



Surveyed and Drawn By:



Hideaway Work Space
1 Empire Mews
London
SW16 2BF

Tel: 0345 257 2023
info@bkrfloorplans.co.uk
www.bkrfloorplans.co.uk

© BKR 2019

APPROX. GROSS INTERNAL AREA *
1249 Ft² - 116.03 M²

Plans Drawn: 20.02.2019