



The
Montague
ON THE GARDENS





THE GUV’NOR’S SUITE

The two-bedroom Guv'nor's Suite (one king, one twin) is like a stylish private home in the heart of the city. Located on the lower ground floor with a beautiful conservatory providing ample natural daylight, the entrance is an elegant marble corridor with walls covered in a faux suede fabric and original prints. Underfloor heating and spotlights create a warm and relaxed mood. Among the numerous features you'll find an inviting copper bath and a wealth of antique furnishings.

- Savoir king-size bed in the master bedroom and twin beds in the second bedroom
- Copper bath in the master bedroom

- Fully equipped kitchen
- Dining table for up to six people
- Luxurious Fragonard toiletries
- Complimentary evening canapés
- Butler service on request
- 24-hour room service
- Evening Turndown service
- Fresh flowers



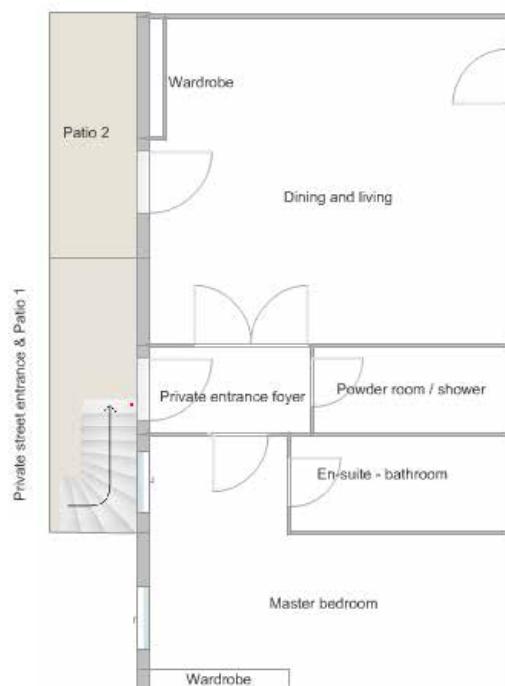


THE BEDFORD SUITE

Named after the successive Dukes of Bedford who all played a part in creating the Bloomsbury that we see today, the Bedford Suite is a beautiful celebration of the local area.

Enter through your own private street entrance or from the hotel, to discover a spectacular Suite with a bedroom, living and dining room, and two stunning dark blue, Caesar stone marble bathrooms. A striking blue-and-white theme enriches this light-filled space. Walls are hung with elegantly striped silk wall fabric, and feature artwork by Spanish artist and sculptor Joan Miró and renowned French artist Henri Matisse. Large windows frame views of evergreen trellises, while fresh flowers can be found in each room.

- Savoir king-size bed
- Own street access from two private terraces
- Two bathrooms
- Victorian mahogany dining table for up to eight people
- Luxurious Fragonard toiletries
- Complimentary evening canapés
- Butler service on request
- 24-hour room service
- Evening Turndown service
- Fresh flowers



THE BLOOMSBURY SET

Taking stunning inspiration from the fashionably eccentric artists of the Bloomsbury set, The Montague on the Garden's reimagined super suite creates a magnificent space of almost 1,500 metres. Combining The Montague's two most esteemed private residences, the Bloomsbury Set is a seamless fusion of the Guv'nor's Suite and the Bedford Suite. The result is an extraordinary combination of space and privacy.

- Private street entrance
- Entrance hall and foyer
- Three bedrooms with additional space for two children
- Three marble bathrooms
- One kitchen
- One breakfast room
- One living room
- One dining and reception room
- Three private patios
- Luxurious Fragonard toiletries
- Complimentary evening canapés
- Butler service on request
- 24-hour room service
- Evening Turndown service
- Fresh flowers



TO BOOK

Please call +44 (0) 207 637 1001
or email bookmt@rchmail.com

MONTAGUEHOTEL.COM

